



K-12 ASSET MANAGEMENT SOFTWARE

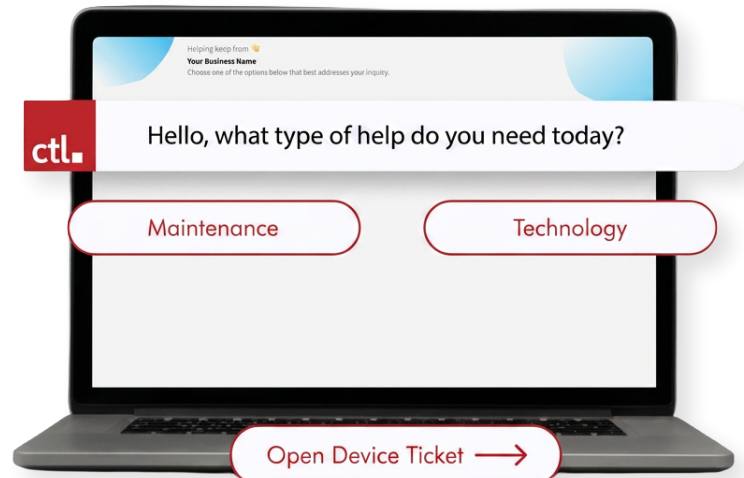
# Total visibility. Zero complexity. Meet Rocket by CTL.

Stop managing spreadsheets and start managing your mission.

Rocket by CTL is a free all-in-one software solution that automates and streamlines the logistical heavy lifting of K-12 technology. Track and manage all your K-12 technology assets: Chromebooks, desktops, carts, interactive displays, and more.

From real-time inventory auditing and automated help desk routing to seamless repair tracking, Rocket provides the data-driven insights you need to maximize your technology investment and keep your district running smoothly.

**Best of all, it's 100% free. No trial, no catch.**  
**Sign-up at now at [rocket.ctl.net](https://rocket.ctl.net)**



## Free Help Desk with advanced reasoning



Reduce cost



Improve visibility and control



Ensure security



Save time



Streamline communication



Migrate easily



Enjoy responsive customer support

# Rocket Asset Management Software by CTL

## Count on Rocket by CTL for:

### Google Console & Incident IQ Integration.

Sync devices, users, and tickets automatically.

### Instant Ticketing.

Easily create a ticket for repairs. Need to ship in a device? Print your shipping labels directly from the system.

### Repair Status.

Whether you're working on the devices in-house or with us, you can monitor each stage in the process.

### Inventory & Data Tracking.

Track software, parts, and billing with detailed data like storage location, ownership history, purchase dates, warranties, MPNs, and more.

### Bulk Data Management.

Import/export tickets and device info, archive users, and check devices through scanning or importing.

### Device Complete Club.

Charge families for repairs and protect your budget.

### Intuitive Cloud-Based Design.

Gain instant access and learn easily. Assign staff different roles and control their access.

### Detailed Device Auditing.

Scan devices, generate reports on unscanned or unmatched devices, and match data for accurate records.

### Help Desk.

Effortlessly handle maintenance and technology tickets by automatically assigning staff members according to the specific building and issue.

### Transparent Data.

View live dashboards and export system data to track device and ticket statistics for better budget planning.



## From Login to Launch



## Sign-up at now at [rocket.ctl.net](https://rocket.ctl.net)

### CTL - Your Technology Lifecycle Partner

For tech leaders stretched thin, CTL is more than a vendor—we're your strategic technology lifecycle partner. CTL replaces transactional vendors with a side-by-side partnership, delivering the most complete set of award-winning product and service solutions that streamline the entire technology lifecycle. CTL is a Certified B Corp™ for our commitment to sustainability and social responsibility.